



STAINLESS STEEL DOUBLE SKIN CHIMNEYS



OASIS DE VIE
ASHRAFIEH

ABOUT US

Our company was founded in 1992 by Mr. Elias Bouery, after more than 25 years of experience in mechanical contracting; «Bouery s.a.r.l» has now expanded into major mechanical contracting company in addition to a manufacturing facility supplying EPC contractors in the Lebanese market with fabricated steel and stainless steel (Tanks, Chimneys, Ladders and stairways...).

Through our dedication and vast experience we have managed to be part of the biggest projects in Lebanon, we even expanded in assisting our clients in other countries (Nigeria, Algeria).

MATERIALS

- **Inner wall:** AISI 316L (1.4404) or AISI 1.4301) 304)
- **Outer wall:** AISI 1.4301) 304) or AISI 316L (1.4404) (Aluminized steel, on request)
- **Insulation:** Rockwool 30 mm for boiler.
• Rockwool 50 mm for generator.
- **Fuel:** Gas, Diesel, Wood, Biofuel and Pellets

APPLICATION:

For boiler:

- Domestic heating and hot water systems
- Industrial / commercial heating
- Bakery ovens
- Open fire places
- Hot air generators
- Ventilation and smoke extraction

For generator:

- Hot air generators
- High temperature
- High back pressure
- High gases evacuation speed

MAIN FEATURES:

For boiler:

- Designed for condensing and dry applications.
- Thermal expansion absorbed in each element.
No requirement for "expansion bellows".
- High mechanical resistance to vertical and horizontal forces.
- Diameters available from 100mm to 600mm.

PRESSURE

Up to 5000 Pa

For generator:

- Thermal expansion absorbed by "expansion bellows" (the outer wall at the male end of straight section includes bellows that are responsible for absorbing of expansion) (at the female end the inner wall expansions freely with the effect of temperature).
- High mechanical resistance to vertical and horizontal forces.
- Diameters available from 100mm to 600mm.

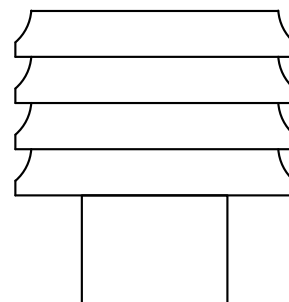
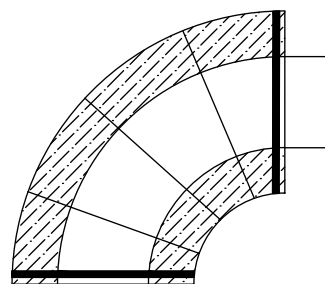
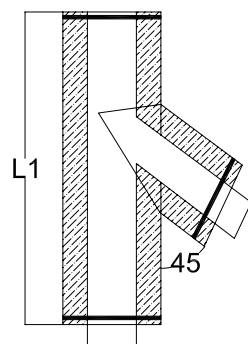
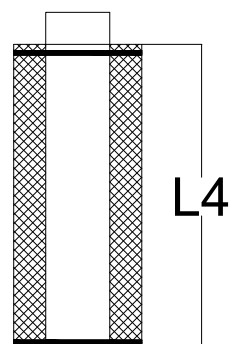
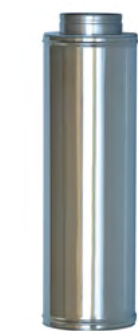
PRESSURE

Up to 5000 Pa

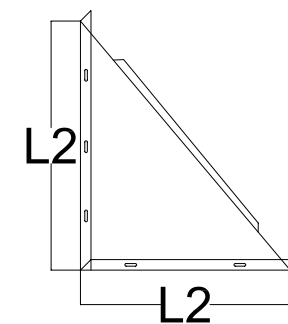
According to the method of manufacture of double wall chimneys, the male and female can absorb the expansion of the stainless steel while leaving the inside diameter so that it can expand as shown in the figure : This mode of fabrication is for each, straight element, elbow and tee. This fabrication technology eliminates the need of expansion elements, leading to a cost reduction and preventing the chimney from weak points.



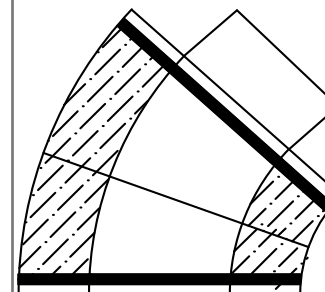
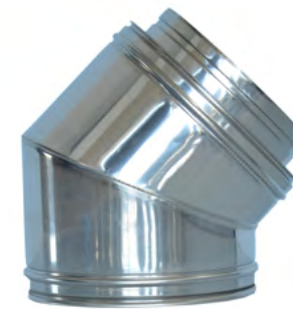
MAIN COMPONENTS OF THE CHIMNEY SYSTEM



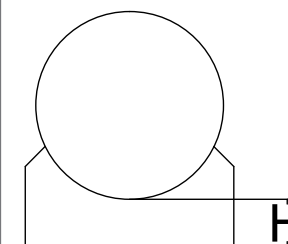
Standard Support



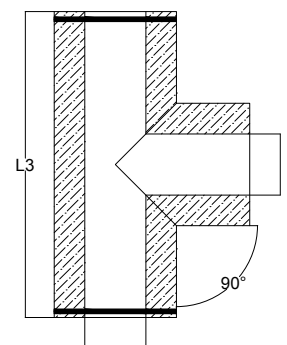
Elbow °45



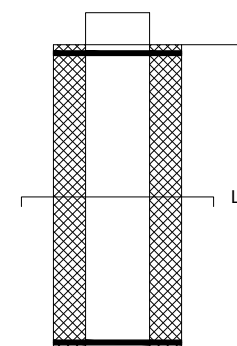
Flat Support



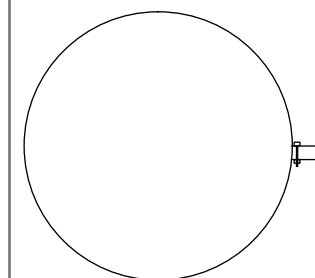
Tee °90



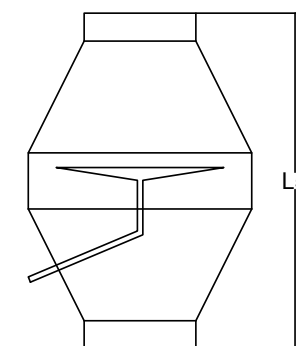
Fix Point



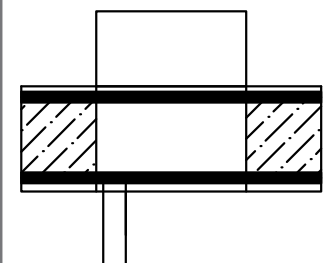
Locking Band



End Cap



End Cap



INSTALLATION DETAILS AND DIMENSION TABLE

DIMENSION(mm)

DIAMETER (D/d) mm									
	225/125	250/150	300/200	350/250	400/300	450/350	500/400	550/450	600/500
L1	380	425	480	520	628	700	770	770	900
L2	225	250	300	350	400	450	500	550	600
L3	380	425	480	520	628	700	770	770	900
L4	940	940	940	940	940	940	940	940	940
L5	400	450	500	560	750	850	1000	1000	1250
H	50	50	50	50	50	50	50	50	50



CAFE NAJJAR
NAHR EL MOT



**OASIS DE VIE
ASHRAFIEH**

